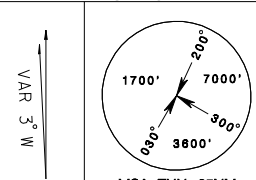
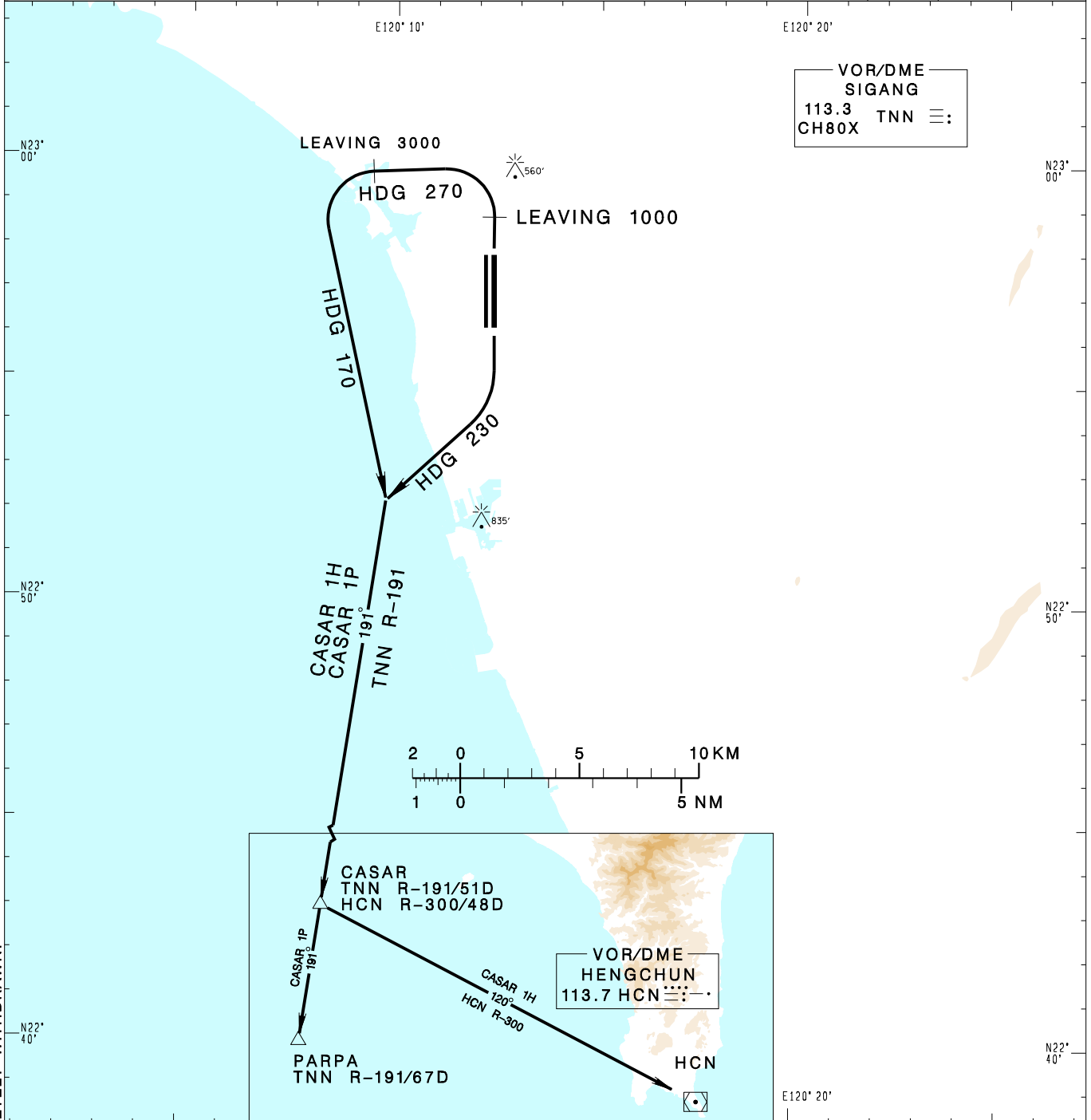


**臺南機場**  
TAINAN AD

RCNN SID  
CASAR 1H  
CASAR 1P

KAOSIUNG APP 124.7 363.8	TAINAN TWR 118.4 236.6 126.18	GROUND 121.6	ATIS NIL		
Apt Elev: 64'		Trans Level: FL130			Trans Alt: 11,000'
BEARINGS ARE MAGNETIC; DISTANCES ARE NAUTICAL MILES; ELEVATIONS, HEIGHTS IN FEET					



CHANGES: KW NDB COMPLETELY WITHDRAWN.

**CASAR ONE HOTEL DEPARTURE**  
 RWY18L: Depart HDG 230 to track TNN R-191 to CASAR, then track HCN R-300 to HCN to join airway.  
 RWY36R: Depart RWY HDG until leaving 1,000ft, then turn left HDG 270 until leaving 3,000ft, then turn left HDG 170 to track TNN R-191 to CASAR, then track HCN R-300 to HCN to join airway.

**CASAR ONE PAPA DEPARTURE**  
 RWY18L: Depart HDG 230 to track TNN R-191 to CASAR, then proceed to PARPA to join airway.  
 RWY36R: Depart RWY HDG until leaving 1,000ft, then turn left HDG 270 until leaving 3,000ft, then turn left HDG 170 to track TNN R-191 to CASAR, then proceed to PARPA to join airway.

**NOTE**  
 1. For RWY18L: Requires a minimum climb gradient of 3.8% (235ft/NM) until 1,200ft.  
 2. For RWY36R: Requires a minimum climb gradient of 5.6% (340ft/NM) until 1,000ft (radar required).